

# HOW TO ASSEMBLE VOLTRON

## YOU WILL NEED



Scissors or craft knife



Multipurpose glue



Butter knife



Ruler



Cutting mat (optional)

## GETTING STARTED

**1** Score all the pieces: Using a ruler as a guide, run the back side of a butter knife firmly along all **dashed** and **dotted** lines.



**2** Using scissors or a craft knife and cutting mat, cut out all of the pieces along the **solid** lines.



**3** Fold all pieces along score lines, using the folding key below as a reference.

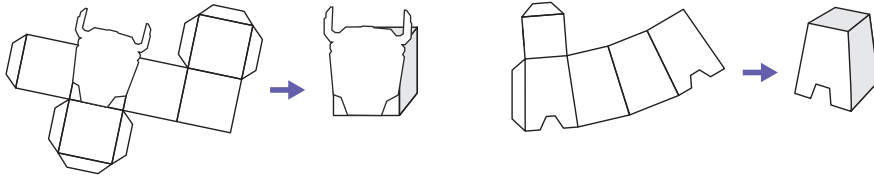


**MOUNTAIN FOLD**

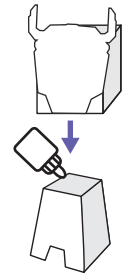
.....

## CHARACTER ASSEMBLY

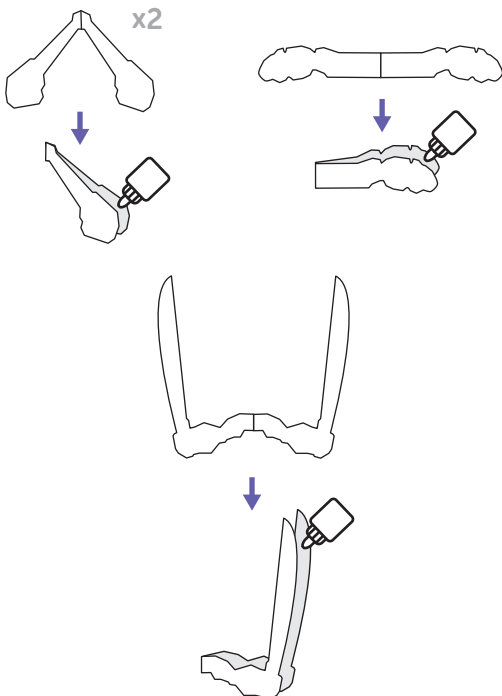
**4** Fold together the head and body of your character while following the indicated glue marks. The head should look like a box!



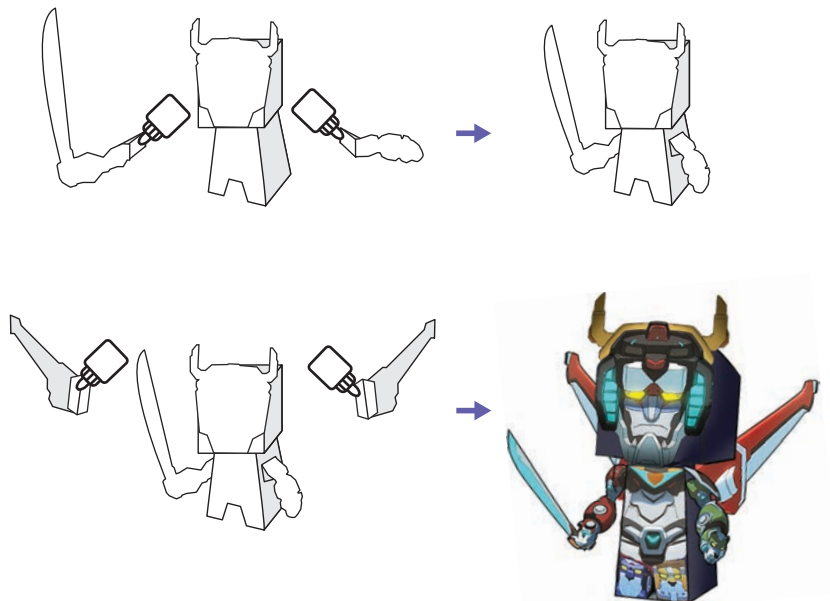
**5** Gently glue the head to the body of the character. Use your finger to prop up the body when you apply the glue.



**6** Fold arms and wings in half and glue two sides together. Then fold at arm crease to attach to the body.

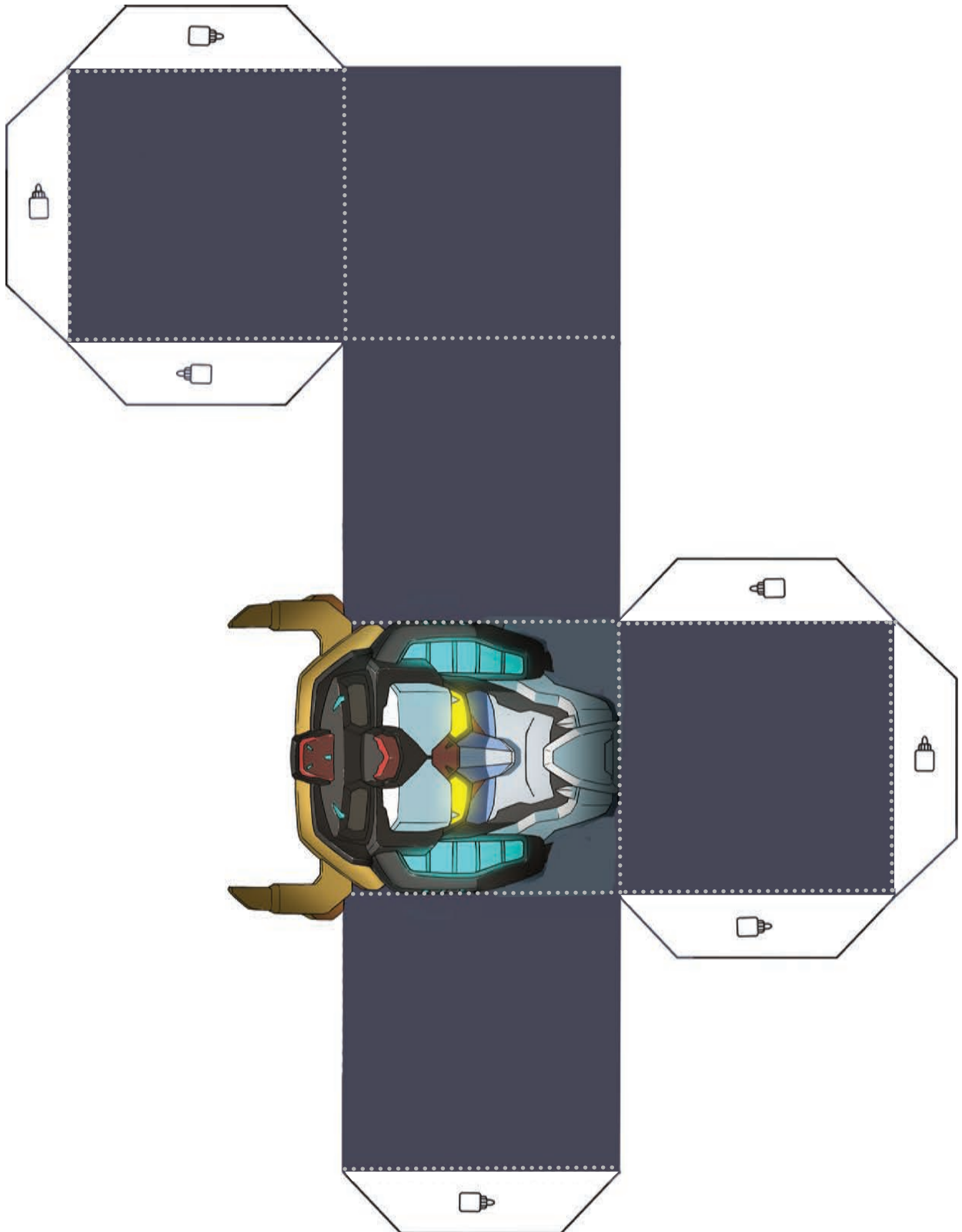


**7** Gently glue arms and wings in place on side of body.





**VOLTRON**





# VOLTRON

